

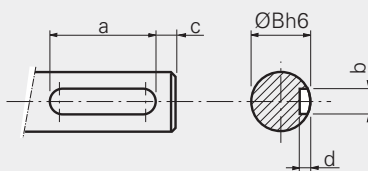
Abbildungen/Images:
Typ AHB-250M-2
(Vorder-/Rückseite
Front/Back)

Abmessungen / Dimensions (mm)

Type	ØA	ØBh6	ØCh6	E	F	G	H	I	K	ØL	M	N	O	P	Q	R	ØS	T	U	V	ØW
AHB- 140M-2(DS*)	92,0	10	22	5,0	39,0	19	25	50,8	M4 x 8	38	16	1	60	60,0	140	45	8,3	25	50	100	8
AHB- 250M-2(DS*)	112,5	12	28	6,5	50,5	19	27	64,3	M5 x 10	45	**Passfedernut s.unten		70	85,0	170	50	8,3	30	75	150	8
AHB- 450M-2(DS*)	137,5	15	32	6,0	52,4	19	27	73,0	M5 x 10	60	**Keyway see below		80	82,5	165	65	8,3	50	75	150	10
AHB- 750M-2(DS*)	158,0	17	35	7,0	73,0	25	38	95,0	M6 x 12	70			100	110,0	220	75	8,3	55	100	200	10
AHB-1750M-2(DS*)	226,0	25	52	9,5	76,2	25	50	106,0	M6 x 12	100			120	135,0	270	80	8,3	55	125	250	10
AHB-3500M-2DS	226,0	25	-	-	152,4	25	50	212,0	-	-			120	135,0	270	143	8,3	125	125	250	10



****Passfedernut / Keyway**



Type	a	b	c	d	ØBh6
AHB- 250M-2(DS*)	20	4	3,5	2,5	12
AHB- 450M-2(DS*)	20	5	3,5	3,1	15
AHB- 750M-2(DS*)	20	5	9,0	3,1	17
AHB-1750M-2(DS*)	25	8	12,5	4,0	25
AHB-3500M-2DS	25	8	12,5	4,0	25

Technische Daten / Technical Data

Type	Moment bei Arbeitsstrom Torque at working current (Nm)	Arbeitsstrom working current I1 (mA)	Widerstand bei 25°C±10% Resistance at 25°C±10% (Ohm)	Spannung Voltage VDC bei/at I1	Drehzahl rpm max. 25°C±10% (min-1)	mögliche Verlustleistung / Possible dissipation (Watt)				Restmoment ohne Strom Residual torque without Current (Nm)	Luftzufuhr Air supply max. (bar)	Luftverbrauch air consumption (l/min)
						mit Luft/with air unterbrochen non continuous	kontinuierlich continuous	ohne Luft/without air unterbrochen non continuous	kontinuierlich continuous			
AHB- 140M-2(DS*)	1,2	270	95	24	12000	1200	1200	300	75	5,24 x 10 ⁻³	6,0	283
AHB- 250M-2(DS*)	2,1	289	96	24	10000	1300	1300	450	110	7,77 x 10 ⁻³	6,0	283
AHB- 450M-2(DS*)	3,6	473	50	24	8000	1800	1800	670	160	1,51 x 10 ⁻²	6,0	425
AHB- 750M-2(DS*)	5,8	410	60	23	6000	2500	2000	1000	200	5,00 x 10 ⁻²	6,0	425
AHB-1750M-2(DS*)	14,5	535	52	26	6000	2800	2200	2400	350	9,18 x 10 ⁻²	6,0	567
AHB-3500M-2DS	29,0	1070	26	26	6000	5300	3000	4800	600	1,36 x 10 ⁻¹	6,0	567

*beidseitige Welle optional / shaft on both sides as an option

Die Bremsen sind ausgelegt für einen Temperaturbereich von -30 bis +85 °C.
The Brakes are designed for a temperature range of -30 to +85 °C.